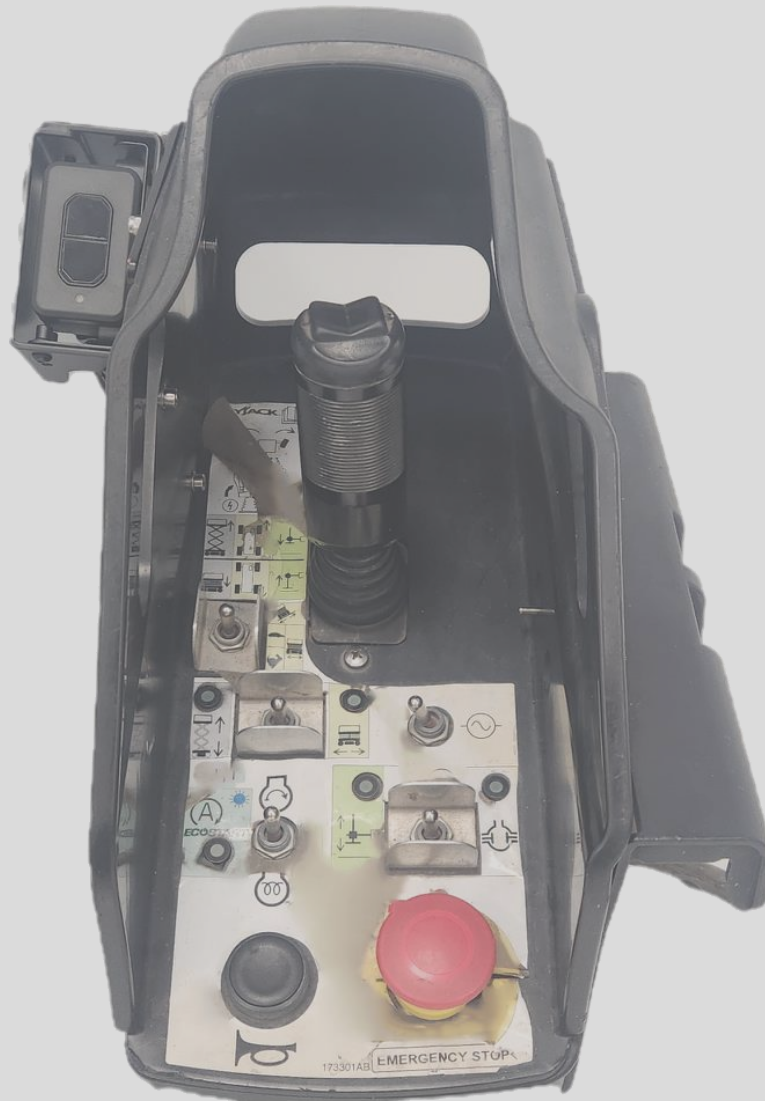


I
N
S
T
A
L
L

M
A
N
U
A
L

EQSS Model6253 – OverWatch Skyjack Large RT Series



**** Failure to follow this installation manual will void warranty ****



REV 1.4

18/02/2026

Model6253 OverWatch Installation Manual

Document # DO001386

AUTHORS:
Kieren Grogan

AUTHORISED BY:
Kieren Grogan

CHECKED BY:
Andrew Donegan

DOCUMENT ABSTRACT:

This Installation Manual details the manufacturer's installation instructions for installing the Model6253 OverWatch on a Skyjack Large RT Series Scissor Lift.

PRODUCT NAME:

Model6253 OverWatch Operator Detection System

REFERENCE DOCUMENTS:

DO0001195 Model6253 OverWatch User Manual

CURRENT DOCUMENT REVISION:

1.4

REVISION INFORMATION:

- 1.1 Initial Document Creation for installation on a Skyjack SJ-9253RT Scissor Lift
- 1.2 Installation manual update of various items following engineering feedback from Skyjack
- 1.3 Inclusion of sensor guard V2 and update of machine configuration instructions
- 1.4 Update on installation images and sensor bracket angle

Important Information

Information contained in this publication regarding this device's applications and the like, is provided only for your convenience and may be superseded by updates. It is your responsibility to ensure that the application or our equipment meets with your specifications.

EQUIPMENT SAFETY SYSTEMS MAKE NO REPRESENTATIONS OR WARRANTIES OF ANY KIND, WHETHER EXPRESSED OR IMPLIED, WRITTEN OR ORAL, STATUTORY OR OTHERWISE, RELATED TO THE INFORMATION, INCLUDING, BUT NOT LIMITED TO, IT'S CONDITION, QUALITY, PERFORMANCE, MERCHANTABILITY OR FITNESS FOR PURPOSE.

Equipment Safety Systems disclaims all liability arising from this information and its use. Use of Equipment Safety Systems' products as critical components in life support systems is not authorised except with express written approval by Equipment Safety Systems. No licenses are conveyed, implicitly or otherwise, under any Equipment Safety Systems intellectual property rights.



This is a class A product certified to AS/NZS CISPR 22:2006. In a domestic environment this product may cause radio interference in which case the user may be required to take adequate measures.

N23041



REV 1.4	18/02/2026	Model6253 OverWatch Installation Manual	Document # DO001386
---------	------------	---	---------------------

Table of Contents

Preparation 5

 Required Tools 5

 Installation Time 5

Installation Instructions 6

 Operator Sensor 6

 Control Module 9

Post Installation Configuration 12

 Overview 12

 Minimum system requirements 12

 Wi-Fi Connection & Web Page Access 12

 Machine Model Selection 13

 Installation Test..... 14

 Change Model Configuration 14

Harness Drawing AS002069 15

Replacement Parts 16

Preparation

Required Tools

The OverWatch has been designed to be fitted using basic workshop tools. Shown below is a list of tools required to complete the installation.

Item	Tool / Description
1	Electric Drill
2	Centre punch
3	Hammer
4	Side Cutters
5	Drill 5.2mm
6	Drill 6.5mm
7	Metric sockets or spanners
8	Needle nose pliers
9	Screw drivers

Installation Time



The suggested time required to install the OverWatch is as detailed below.

Task	Estimated Time (Minutes)
Open the operator control box	1
Drilling of all mounting holes for the various components	13
Mechanical assembly	10
Electrical assembly	10
Post installation system tests	10
Close the operator control box	1
Total	45

Installation Instructions

If any decals are damaged during the installation process or if any decals are obstructed following the installation, they should be replaced accordingly.

Operator Sensor

Step	Description	Diagram
1.	Remove 6 bolts located at the bottom of the plastic enclosure to expose the internals of the operator control box.	
2.	Drill five x 5.2mm holes in the locations shown in the diagram Note: Use the sensor mounting plate as a guide to drill holes to mount the operator sensor.	

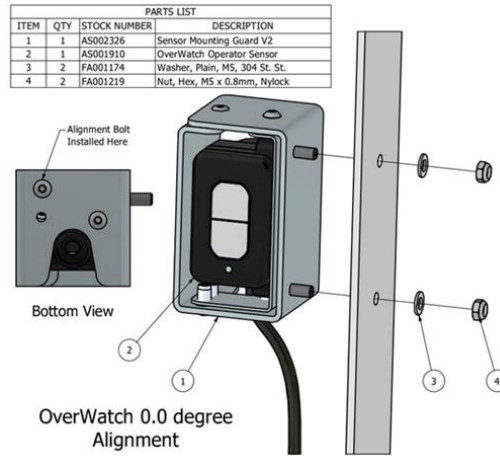
3.

Sensor Mounting Guard

Attach the bracket in position using the M5 nuts and washers.

Make sure that the sensor is on the 0.0-degree angle, such that it is **not** twisted away from the joystick.

The 0.0-degree angle is achieved by using the bolt hole as shown in the image.



4.

Drill two **6.5mm** holes as show in the image, these holes are required to make room for the M5 lock nuts on the mounting plate.



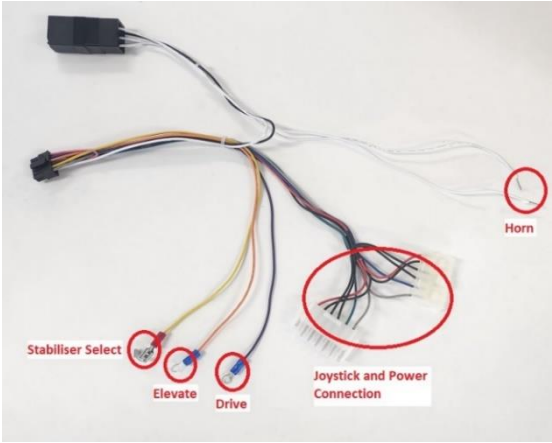
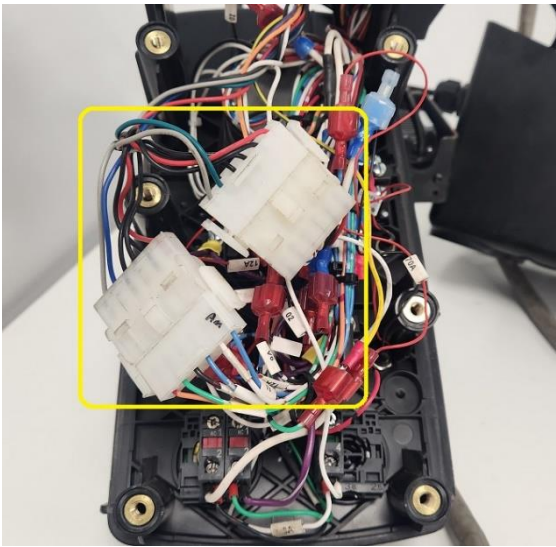
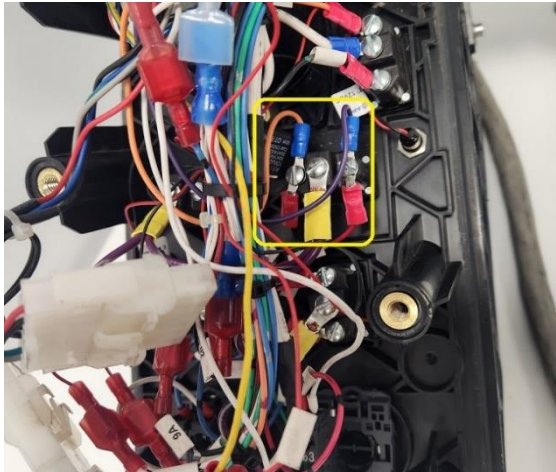
5. Attach the mounting plate to the side of the control box using the nuts, bolts, and washers, as shown in the image.



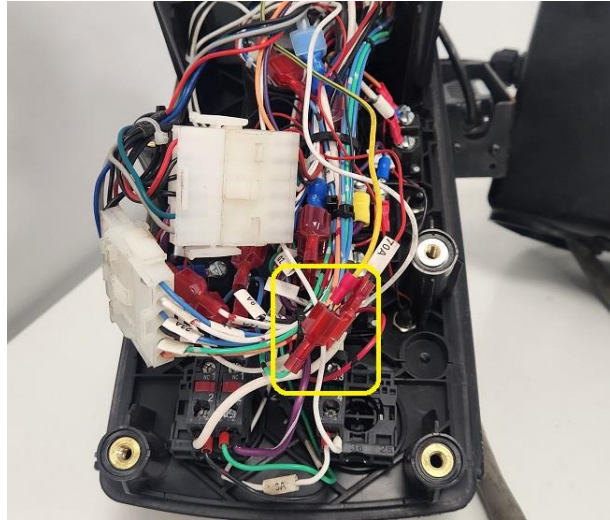
6. Install the cable gland in the location shown in the diagram. Clamp the wire to the side of the enclosure using the supplied P-Clip.



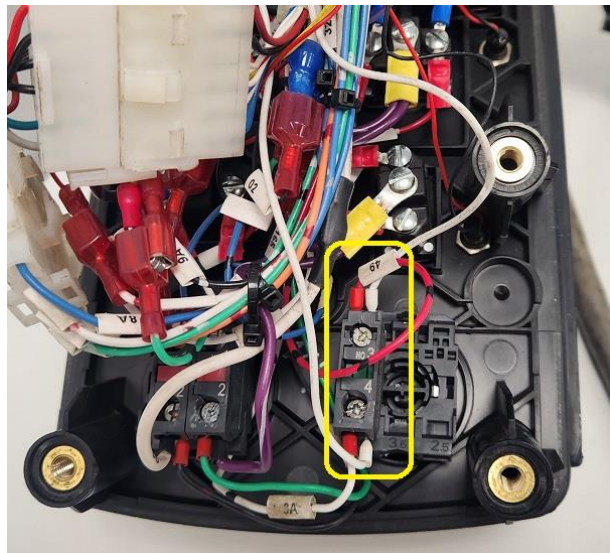
Control Module

Step	Description	Diagram
1.	Wiring connections are made with the AS002069 harness.	
2.	<p>Joystick and Power Connection:</p> <p>Disconnect the 6-Pin connector from the joystick and install the OverWatch harness in series with the connectors.</p>	
3.	<p>Elevate/ Drive Select Connection:</p> <p>At the back of the Drive/Elevate switch,</p> <p>Install the orange wire from the OverWatch harness to the wire id 09 and install the purple wire to the wire id 12.</p>	

4. **Stabiliser Select Connection:**
 Install the **yellow/green** stabiliser select wire from the OverWatch harness to the back of the Stabiliser Light wire id 70A.



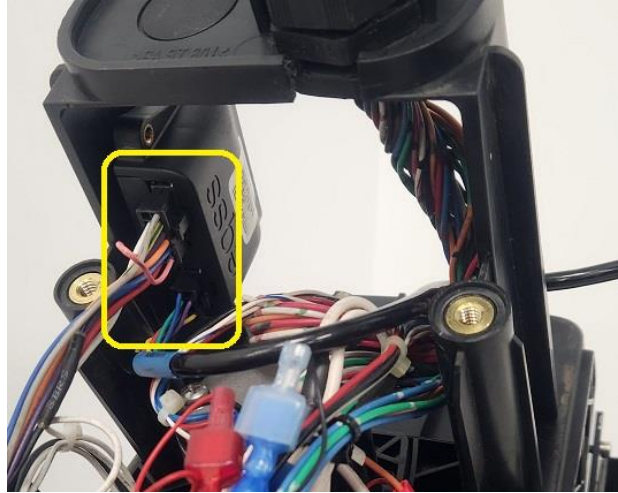
5. **Horn Connection:**
 At the back of the horn push button, install the OverWatch harness white wires to the terminals 3 and 4.



6. Mount the OverWatch ECU inside the plastic frame using the adhesive velcro tape as shown in the location.

Connect the 8-pin connector from the operator sensor and the 12-pin connector from the overwatch harness to the ECU.

Use cable ties to combine the cables neatly together.



7. Reassemble the control box and secure the operator sensor cable by using a cable tie.



Post Installation Configuration

Overview

After the system has been installed it must be configured with the parameters to suit the machine. Follow the instructions below to configure the OverWatch.

Minimum system requirements

Any smartphone, tablet or laptop that meets the following requirements:

- The device can connect to a Wi-Fi access point
- The device has an up to date web browser installed. Firefox, Chrome or Safari are recommended.

Wi-Fi Connection & Web Page Access

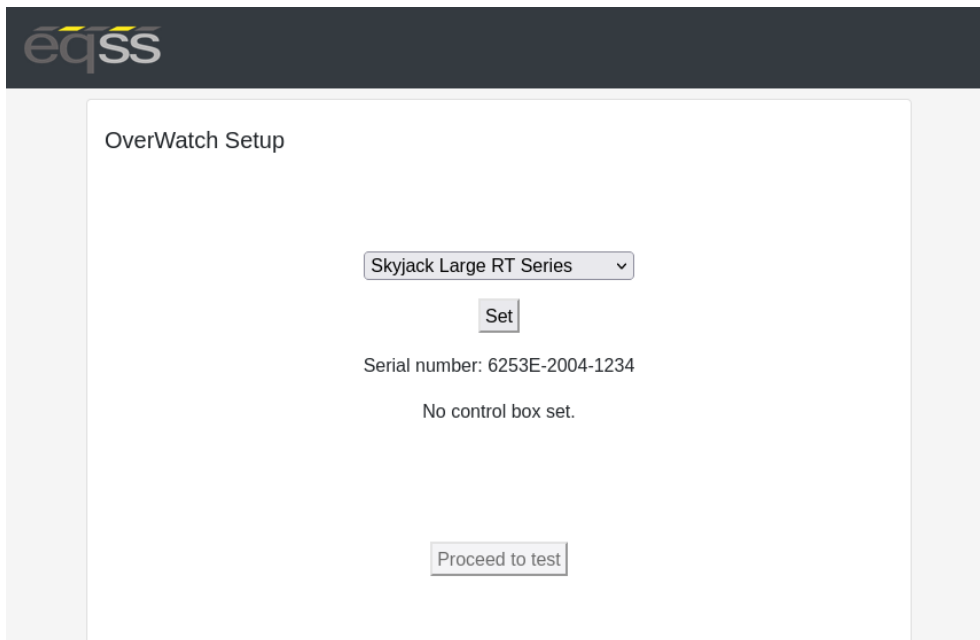
To enable the Wi-Fi connection on the OverWatch to complete the configuration follow the steps below.

1. Power down the platform control box with the ESTOP
2. Wait 5 seconds
3. Power up the platform control box with the ESTOP
4. While standing **in front of the operator sensor**, switch on the OverWatch
5. As the welcome chime starts to play, cover the sensor. The LED will flash white then black to acknowledge.
6. Remove your hand from the sensor. The LED will flash white then black to acknowledge.
7. After covering then uncovering the sensor this way 2 more times, "Wi-Fi On" will be announced
8. On your Wi-Fi enabled device (laptop, tablet, smartphone, etc), show the available wireless networks
9. Select the wireless network (starts with "overwatch") to connect to the OverWatch
10. When prompted, enter the **password 12345678**
11. Open your preferred web browser (Chrome, Firefox, Safari)
12. Enter the following into the address bar <http://192.168.4.1> to open the OverWatch main page

Machine Model Selection

Follow the instructions below to configure the OverWatch.

1. Select the Setup option
2. If there is a password field at the bottom of the page, follow the instructions in Change Model Configuration to obtain the password and enter the password field
3. Select the EWP Model from the drop-down list and click Set
4. Click on Proceed to test to begin the installation test



OverWatch Setup

Skyjack Large RT Series ▾

Set

Serial number: 6253E-2004-1234

No control box set.

Proceed to test

Installation Test

After the model configuration has been set or updated an Installation Test must be performed. This will ensure the installation has been correctly performed and the OverWatch is functioning correctly. Follow the instructions on the web page to complete the Installation Test.

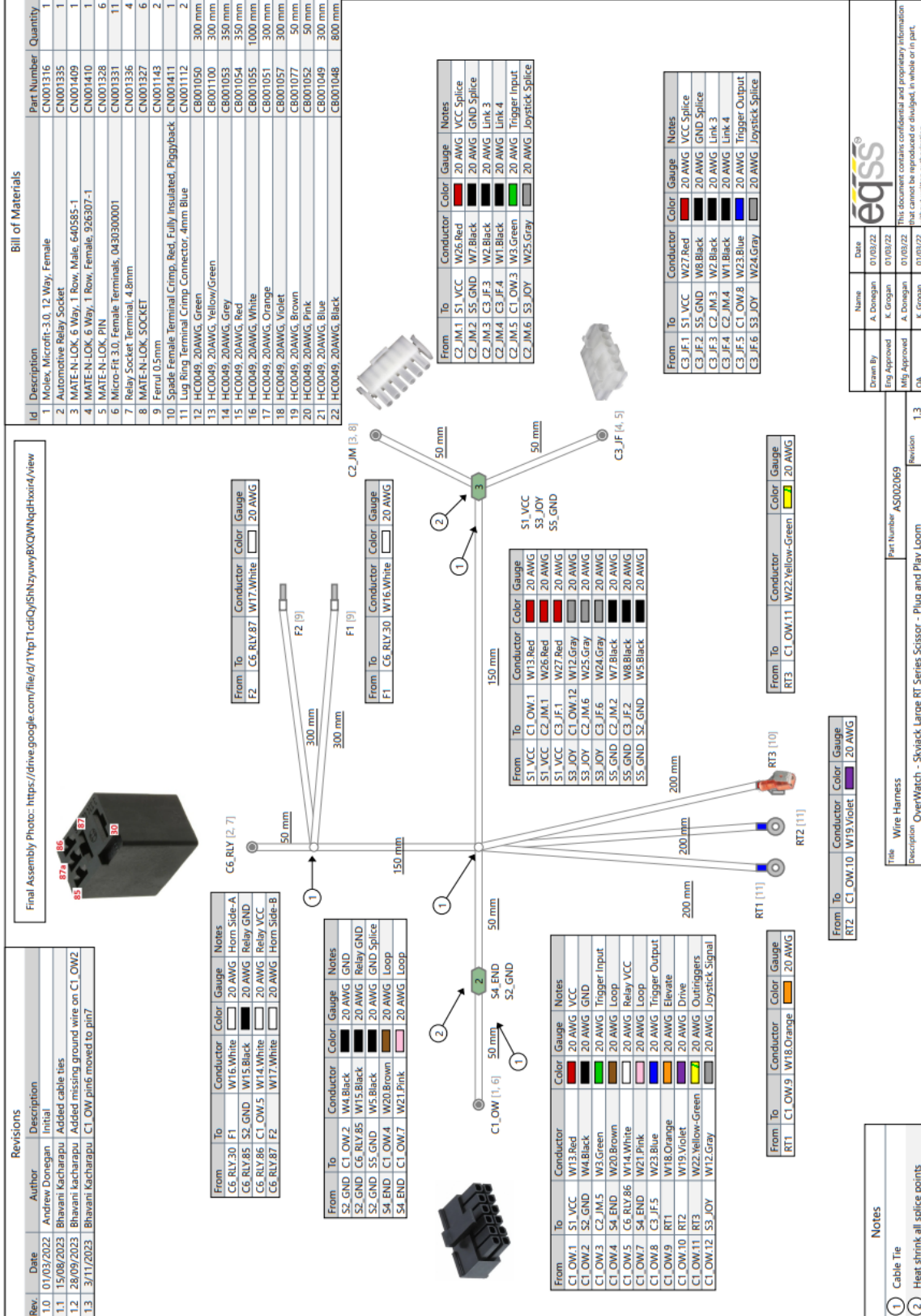
Change Model Configuration

To reconfigure the OverWatch for a different model requires an authorisation password. The authorisation password is generated from the EQSS website. The EQSS website requires a login username and password, contact EQSS for these details.

Follow the instructions below to obtain an authorisation password. It is important to note that each ECU has a unique serial number and a unique password.

1. Open your web and enter the following into the address bar <http://www.eqss.com.au/overwatch> to open the Login page
2. Enter your username and password
3. Enter the EUC serial number which is shown on the setup page or on the ECU serial number sticker, also enter the owner and model details of the EWP and then click Generate Hash
4. The generated Hash code or password can be used to change the model configuration.

Harness Drawing AS002069



Replacement Parts

Replacement parts for this OverWatch kit are available from EQSS, please email sales@eqss.com.au
Shown below are the part numbers for the major components included in this model specific kit.

Part Number	Description
AS002068	OverWatch - Complete kit for Skyjack Large RT series
AS001910	OverWatch - Operator sensor with M20 gland
AS001916	OverWatch - Electronic Control Unit (ECU)
AS002069	OverWatch – Skyjack Large RT series harness
AS002326	OverWatch - Sensor guard V2
ME001903	OverWatch - Sensor mounting plate